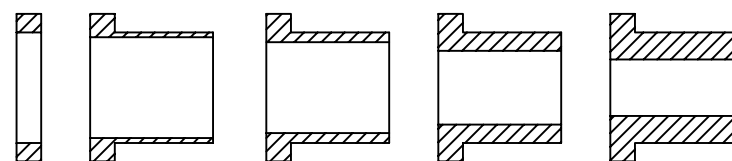
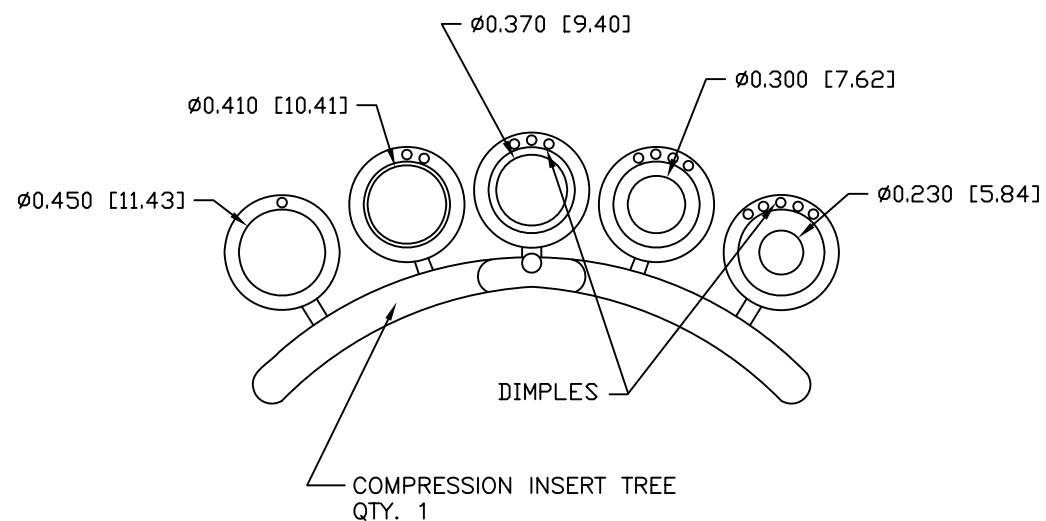
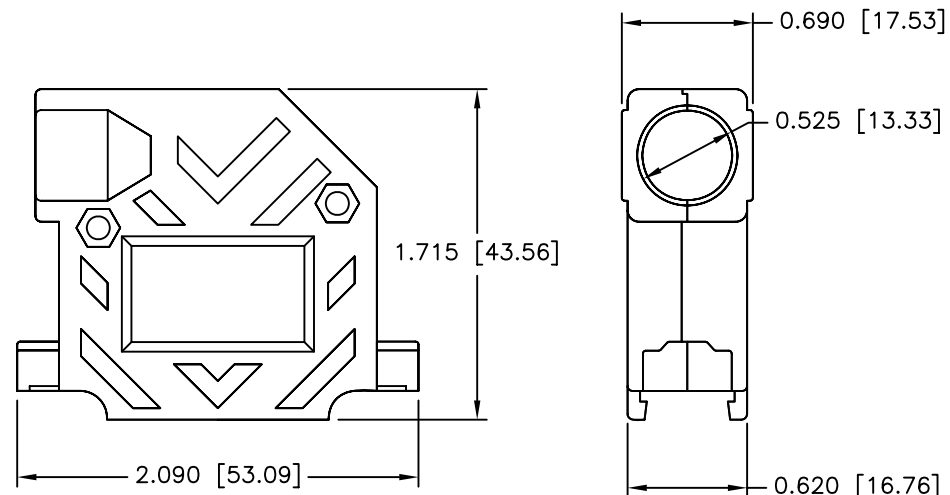
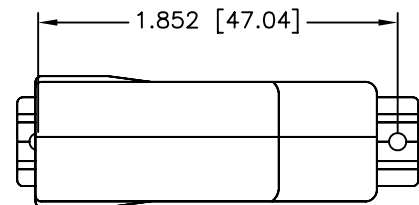
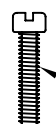

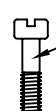



| REVISIONS | | | | |
|-----------|-----|-------------|-----------|----------|
| ZONE | REV | DESCRIPTION | DATE | APPROVED |
| | A | ECN 0605 | 10-AUG-06 | |
| | B | ECN 0647 | 09-APR-08 | |



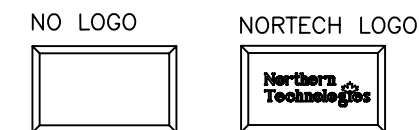
 #4-40 X 7/16" FILLISTER HEAD MACHINE SCREW
 MATERIAL - STEEL
 FINISH - BRIGHT ZINC
 QTY: 2 EACH

 #4-40 #2 BLANK HEX NUT
 MATERIAL - STEEL
 FINISH - BRIGHT ZINC
 QTY: 2 EACH

 #4-40 X 1/2" FILLISTER HEAD CAPTIVE SCREW
 MATERIAL - STEEL
 FINISH - BRIGHT ZINC
 QTY: 2 EACH

 #4 SADDLE WASHER
 MATERIAL - STEEL
 FINISH - BRIGHT ZINC
 QTY: 2 EACH

THIS IS A CONTROLLED DOCUMENT AND IS SUBJECT TO CHANGE. CONTACT NORTHERN TECHNOLOGIES ENGINEERING FOR THE LATEST REVISION.



PART NUMBER INFORMATION

| PART# | LOGO STYLE | SUPPLIED |
|------------|-------------------------|----------|
| A30E420000 | NO LOGO TOP COVER | BULK |
| A30E421000 | NORTECH LOGO TOP COVER* | BULK |
| A30E420100 | BOTTOM COVER | BULK |
| C88E420000 | NO LOGO | PACKAGED |
| C88E421000 | NORTECH LOGO* | PACKAGED |

* - SPECIAL ORDER ITEM - CONTACT NORTHERN TECHNOLOGIES

CONNECTOR COVER:

- 1.MATERIAL: ZINC ALLOY
- 2.FINISH: BRIGHT ZINC PLATING PER NTC SPECIFICATION N/T 000100
- 3.DIMENSIONS: INCHES [MM]
- 4.TOLERANCE: ±0.015 [0.381]

COMPRESSION INSERT TREE

- 1.MATERIAL: THERMOPLASTIC
- 2.COLOR: BLACK
- 3.DUROMETER: 75 ±5 TYPE A PER ASTM D2240
- 4.DIMENSIONS: INCHES [MM]
- 5.TOLERANCE: ±0.020 [0.508]

| | | | | |
|---|-----------|---|-----------------|-------------------------|
| UNLESS OTHERWISE SPECIFIED 1. ALL DIMENSIONS ARE IN INCHES (MM) 2. DIMENSIONS ARE TYPICAL | | Northern Technologies <small>THIS DRAWING IS THE PROPERTY OF NORTHERN TECHNOLOGIES AND SHOULD NOT BE REPRODUCED WITHOUT NORTHERN TECHNOLOGIES WRITTEN PERMISSION.</small> | | |
| DRAWN JSD | | PART NUMBER SEE PART NUMBER INFORMATION | | |
| 21-JUN-05 | | DESCRIPTION CMR 25 RIGHT ANGLE COVER | | |
| CHECKED SCN | 21-JUN-05 | SIZE B | CODE 200_106 | DWG NO. 0002-200-106 |
| ISSUED | 01-DEC-05 | SCALE 1:1 | | REV |
| | | | | SHEET 1 OF 1 |